

Business Intelligence Using SharePoint 2013 and Office365

Firdouz Hussain Shaik
Trigent Software

Introduction

Many successful companies have been investing large sums of money in business intelligence and data warehousing tools and technologies. They know that up-to-date, accurate and integrated information about their supply chain, products and customers are critical for their very survival. All organizations have large amount of raw transactional data. If they are not converted into meaningful and useful information, then the benefits of these data to business growth is diminished. To convert the raw data into insights and to visualize data through rich diagrams, Microsoft has few excellent BI technology choices. The purpose of Business Intelligence (BI) is to provide decision makers with the information necessary to make informed decisions. The information is delivered by the Business Intelligence system via reports, dashboards, etc. Business Intelligence refers to a set of methods and techniques that are used by organizations for tactical and strategic decision making. It leverages technologies that focus on counts, statistics and business objectives to improve business performance.

Summary of Business intelligence features in SharePoint and Office365

- ✓ Predefined Business Intelligence Center site template to centrally store and manage data connections, reports, scorecards, dashboards, Apps.
- ✓ People can discover, analyze, and share data using Business intelligence center,.
- ✓ Dashboard designer can be used to create Score Cards, KPIs, Filters, Reports and Dashboards.
- ✓ Excel features like Power Query, Power Pivot, Power View, and Power Map can be used to create the dashboards, charts and KPIs.
- ✓ SQL Server Reporting Services to create reports.
- ✓ Visio services to create data graphics and smart shapes that connect to your data.
- ✓ Extend business intelligence capability through Power BI

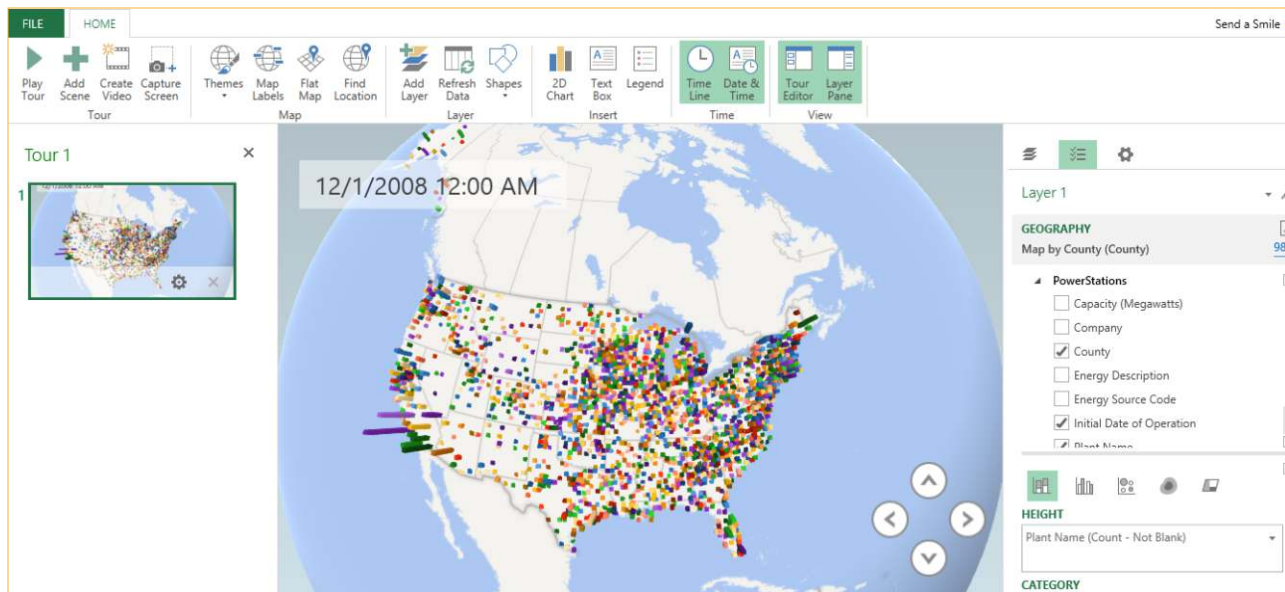
Business Intelligence features In SharePoint and Office365

Excel

If the data is relatively small, and you have traditionally used Excel to organize, filter and present data, then this is the easiest way to a centralized BI. Instead of distributing Excel documents via email or central file share, publish the Excel document with appropriate security controls to a SharePoint document library. Users can easily view and interact with the workbooks and data in ways that suit their needs.

Advanced Excel BI Features

Power Query, Power Pivot, Power View, and Power Map enable you to find and bring together data from a variety of sources and create powerful, interactive views and mashups in Excel. Power Query supports importing data from a wide range of web sources, including HTML pages, as well as importing data from web APIs. Power Query supports XML, JSON and OData formats. Power Query Increase your reporting capabilities in Excel. One of the main advantage of Power Query is to Discover, combine, & refine data in sheet. Power Map for Excel is a three-dimensional (3-D) data visualization tool that lets you look at information in new ways. A power map lets you discover insights you might not see in traditional two-dimensional (2-D) tables and charts. Here is the power Map Screenshot



Excel Services

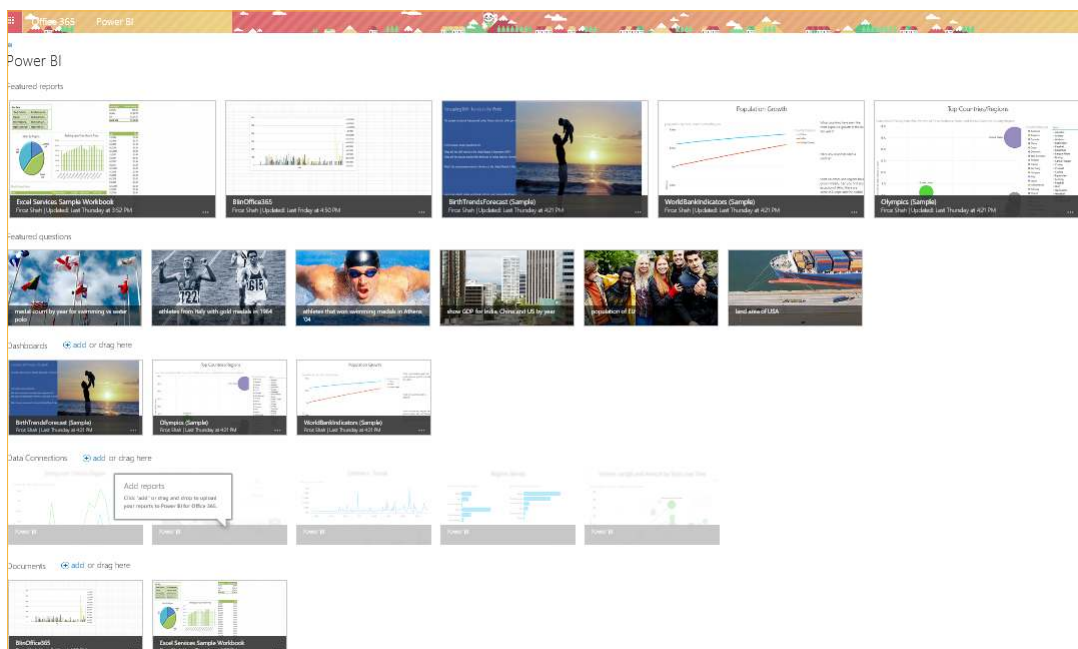
Excel Services enables you to view, interact with, and refresh workbooks in a browser window. Share the centrally managed workbooks that are published to SharePoint so that users can view and explore workbooks in a browser window similar to using the Excel client. You can display Excel content in SharePoint sites using Excel web access webpart seen right side.



Power BI for Office365

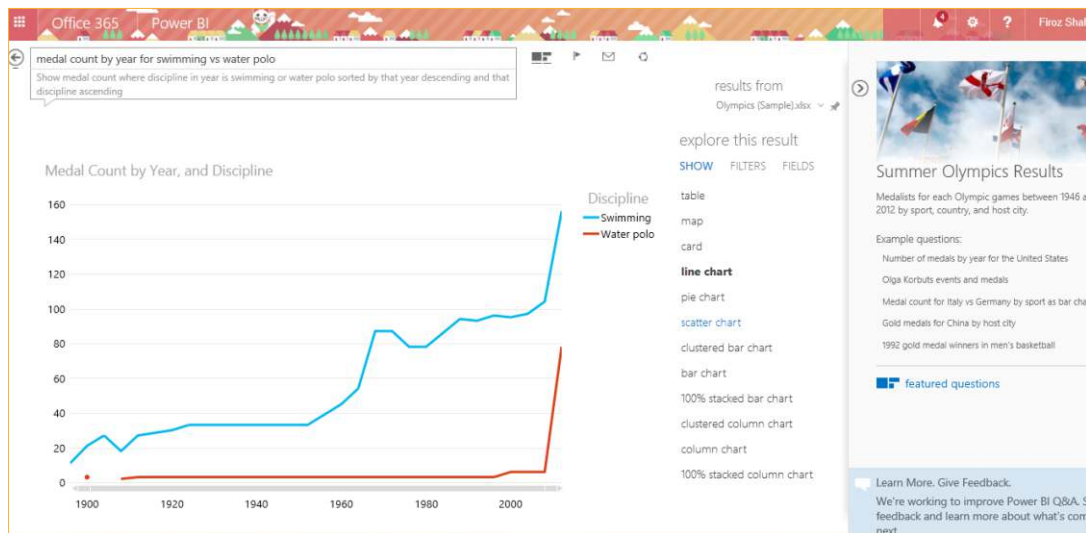
Power BI for Office 365 provides you with a robust, self-service BI solution in the cloud. Power BI for Office 365 offers Power BI sites on Office 365. You can use Power BI sites on Office 365 to transform a basic SharePoint experience to a more visual, dynamic way to share and manage BI content such as Excel workbooks. In Power BI sites on Office 365, workbooks are displayed as thumbnail images that make it easy for people to find and open the workbooks they want to see. In addition, Power BI sites on Office 365 gives users easy access to the many additional BI capabilities that are available in Power BI for Office 365. Power BI sites on Office 365 are available only in Power BI for Office 365.

Here is an example of the Power BI site.

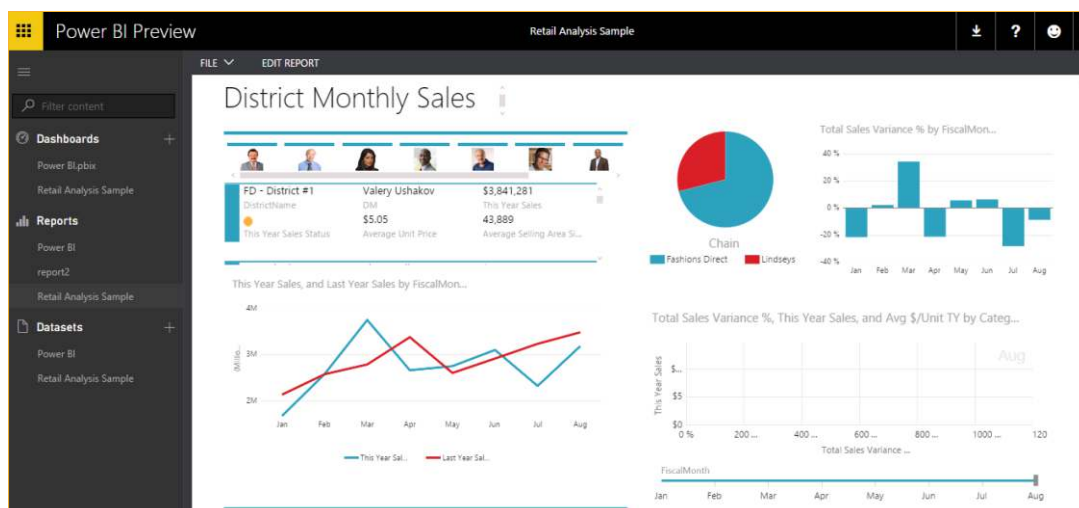


Key features Include

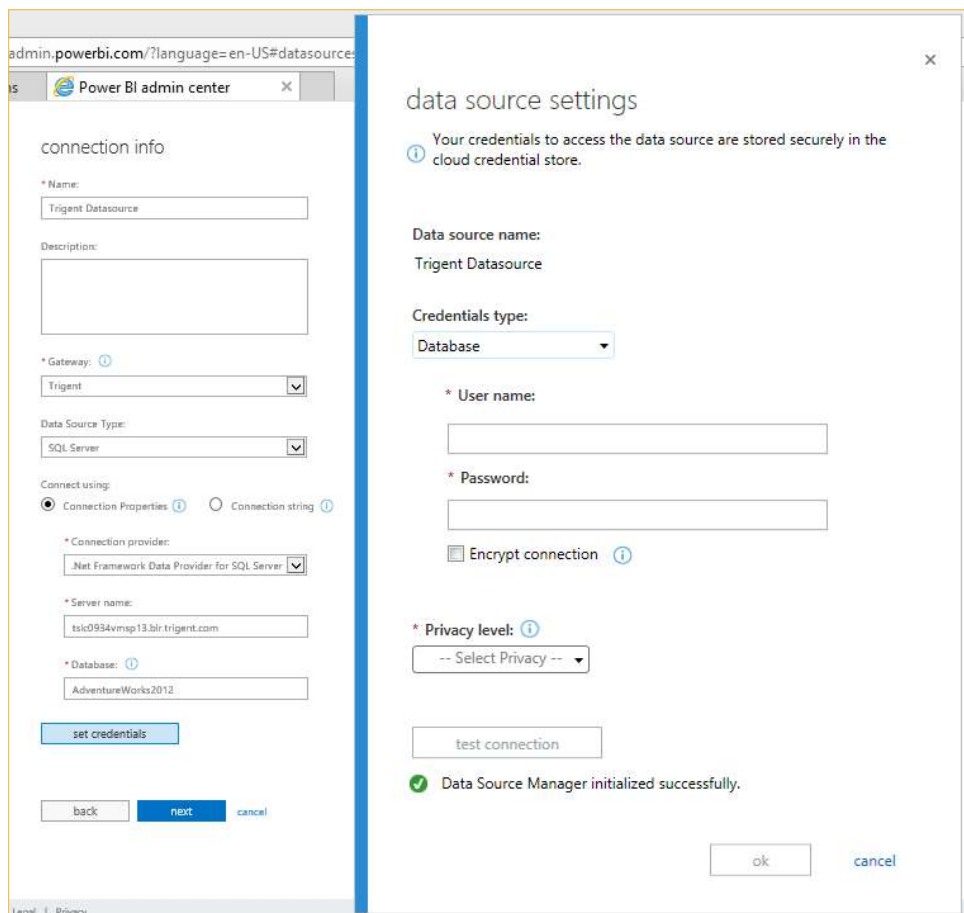
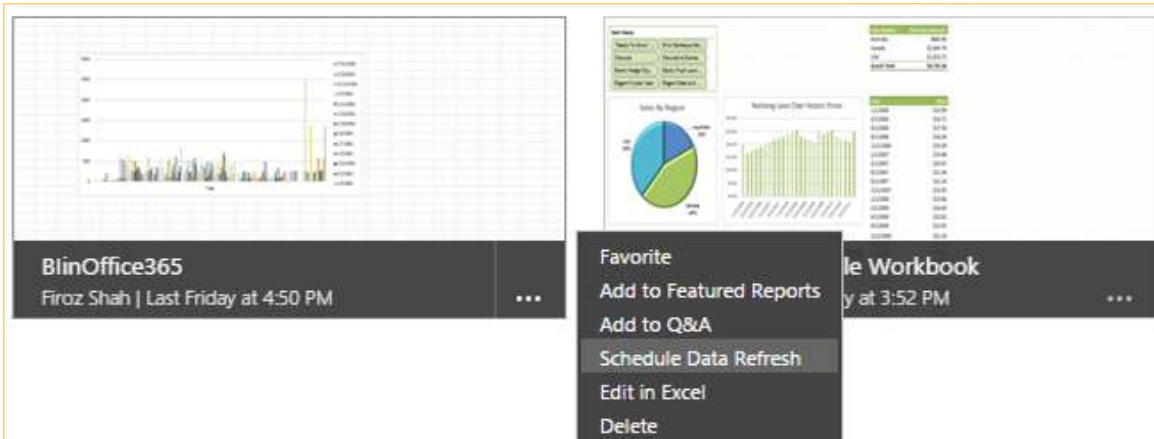
- ❑ Power BI for Office 365 can support workbooks up to 250 MB, provided the workbooks are configured a certain way.
- ❑ Power BI Q&A, which enables you to ask questions and get answers using natural language queries.
- ❑ Power BI Windows Store app, which is an application that is available in the Windows Store. You can use Power BI app to view and interact with Excel workbooks on a Windows tablet.



- ❑ You can set up automatic data refresh for your workbooks in Power BI for Office 365 sites. Power BI admin center helps you to create the gateway to connect the on premise data source. Datamanagement gateway tool act as as bridge between cloud and on premise data sources.

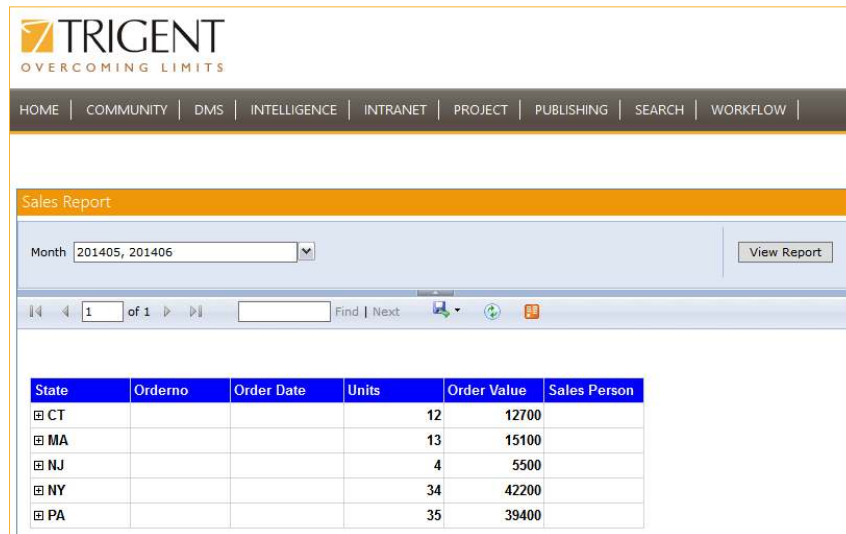


- ❑ For schedule data refresh you have to provide the connection string, provider and some other information related to Office365 and on premise details. Here is the screenshot related to connection details.



SQL Server Reporting Services

SQL Server Reporting Services enables you to develop and manage powerful reports. There are different tools to create the reports like power view for SharePoint, report designer and report builder.



Visio Services

Visio Services lets you share and view Visio drawing (*.vsdx) and Visio web drawing (*.vdw) files. By using this feature you can create data connected diagrams and place it central location for viewing in browser. You can do data refresh also to get the latest data from the datasource.

Performance Point Services

Performance Point Services enables you to create and view interactive dashboards that display key performance indicators (KPIs) and data visualizations in the form of scorecards, reports, and filters. This feature is available only in SharePoint On-premise. It requires Analysis services data cubes.



About Trigent Software Inc.

Trigent is a privately held, professional IT services company and a Microsoft Gold Partner with its U.S. headquarters in the greater Boston area and its Indian headquarters in Bangalore. We provide consulting services in various technologies including Microsoft Solutions. Our operating model is to conduct sales, customer relationships and front-end consulting (e.g., business case, requirements, architecture) onsite with our clients and perform the detail design, development, integration, testing and quality assurance offshore at our world class development and support center in Bangalore. We are a SEI CMM Level 4 company and is ISO 9001:2000 TickIT certified organization.

For sales contact sales@trigent.com or call 508-490-6000.



Microsoft Partner

Gold Application Development

Gold Collaboration and Content